

Folding door system

- ▶ WingLine L / attached to the side
- ▶ All the benefits at a glance



Experiencing folding doors in a new way. WingLine L lets you produce folding sliding doors in a completely new dimension of convenience. The revolutionary Push / Pull to move opening mechanism provides access to everything inside the cabinet with just one movement of the hand. An impressive panorama effect! Further highlights:

optimised running performance, soft opening and closing, tool-less installation as well as minimal door protrusion for efficiently organising the space inside. WingLine L competently and securely moves door wings weighing up to 25 kg and measuring up to 2,400 mm in height: a talented all rounder for the bedroom, kitchen and office.



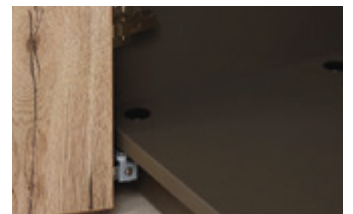
Panorama convenience: access to 6m² of cabinet content, leaving everything in perfect view.



For easy and gentle opening: Push / Pull to move module first class practical convenience.



Optimum use of space: minimal door protrusion, with door reliably held in place while open.



Purist and convenient: no distracting profile on the bottom panel.



Handleless perfection: The door set opens all the way with just one push – from the Push to move module.



Impresses everywhere: WingLine L is suitable for all commonly used door wing formats.



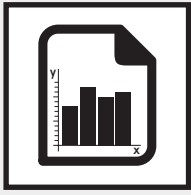
Impressive running performance: as smooth as never before and virtually silent.



Easy and cost effective: intelligent installation accessories for efficient one person installation.

Folding door system

- ▶ WingLine L / attached to the side
- ▶ Summary



Performance summary

6 – 7

- ▶ Technical details in brief
- ▶ Door sizes
- ▶ Operating principle



System summary

8 – 9



System components

10 – 19



Planning dimensions

20 – 23



Installation

24 – 28



Accessories

78 – 92



Technical information

- ▶ Calculating door weights
- ▶ Quality criteria

93 – 94

95

Folding door system

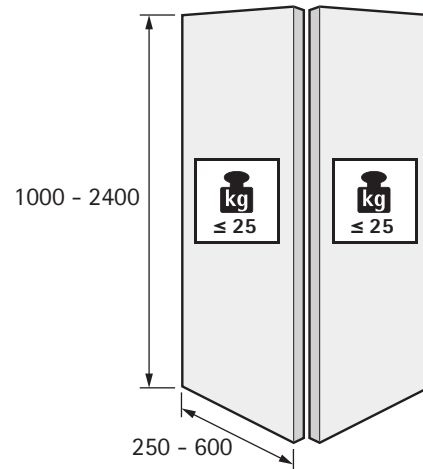


- ▶ WingLine L / attached to the side
- ▶ Performance summary

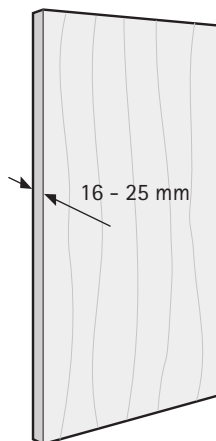
Technical details in brief

- ▶ For one folding door with 2 wings
- ▶ Overlay door position
- ▶ For wooden doors
- ▶ Push / Pull to move
- ▶ Suitable for use with Sensys hinge with Silent System
- ▶ Door wing weight up to 25 kg
- ▶ Door height up to 2400 mm
- ▶ Door wing width up to 600 mm
- ▶ Tested with 40000 cycles

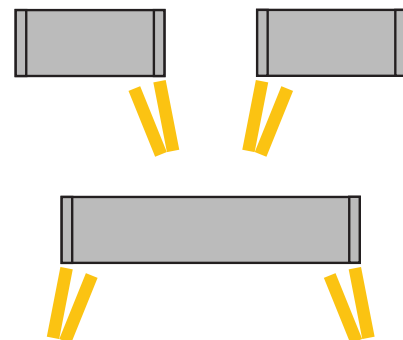
Door format and door weight



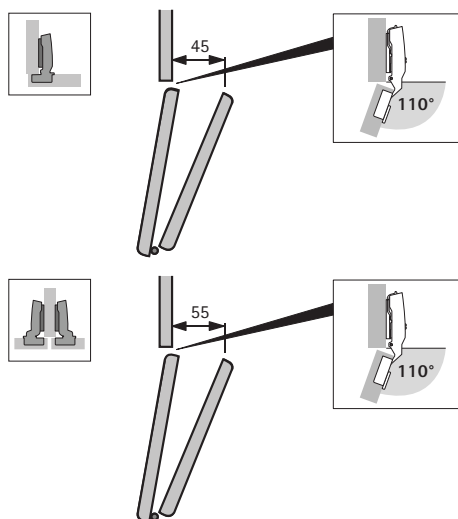
Door material



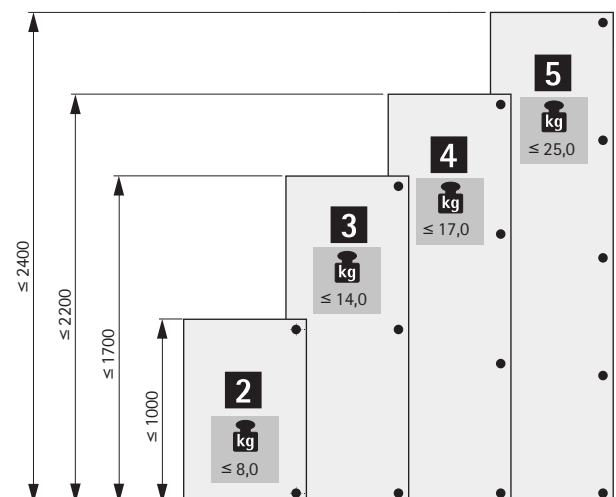
Number of door wings and door position



Door protrusion



Recommended number of carcass and folding door hinges

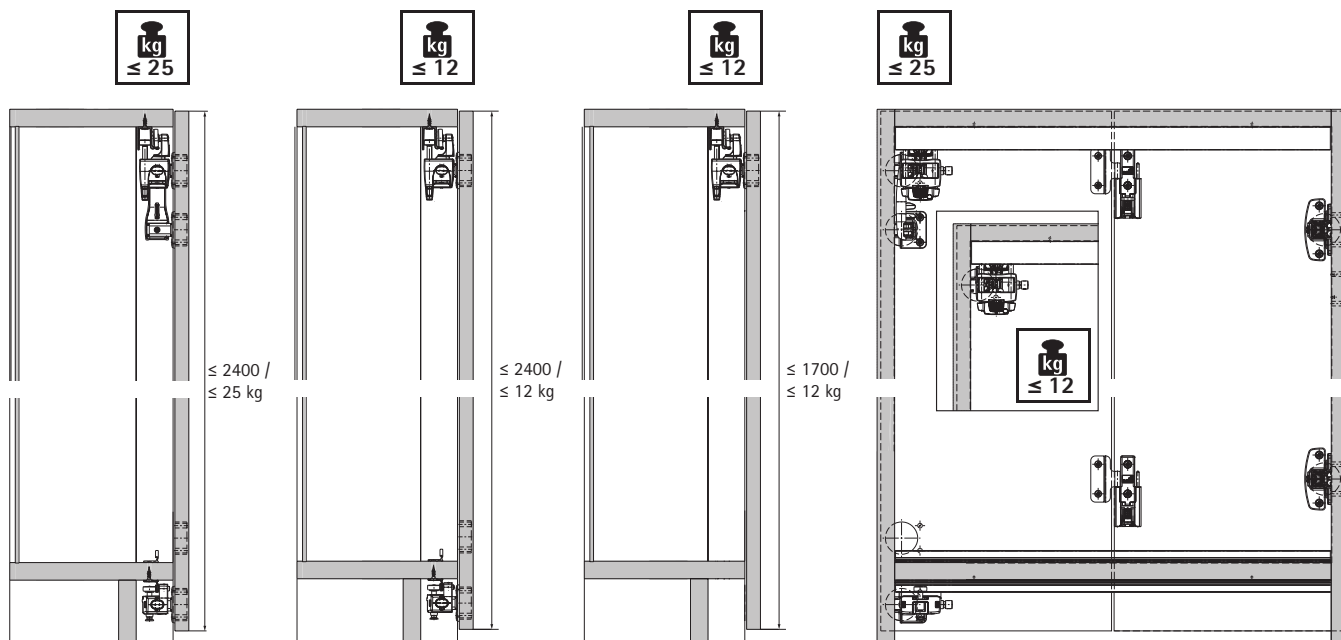


Folding door system

- ▶ WingLine L / attached to the side
- ▶ Performance summary

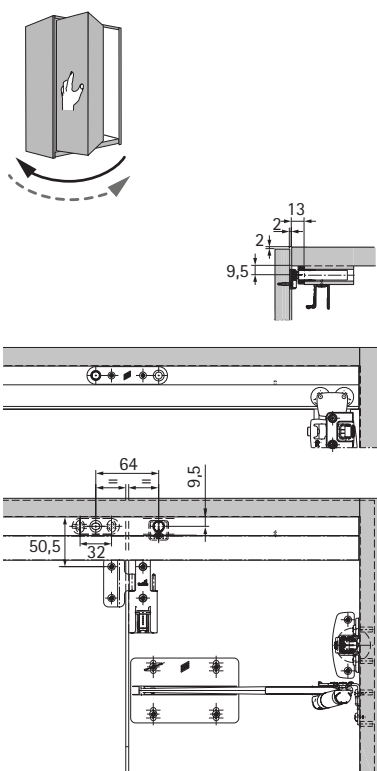


Operating principle / WingLine L

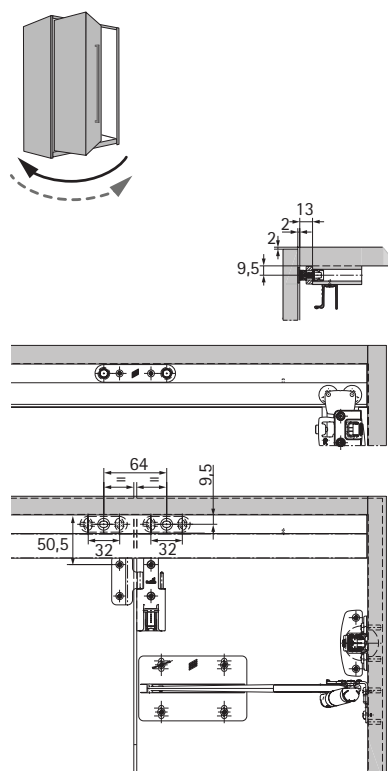


Operating principle / WingLine L with Push to move / Pull to move / Pull to move Silent

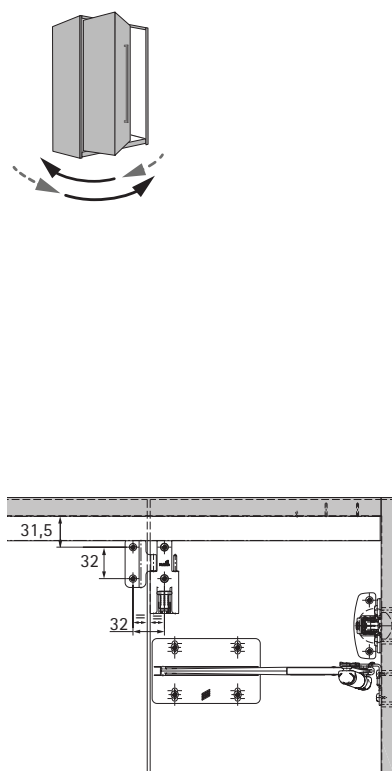
Push to move



Pull to move



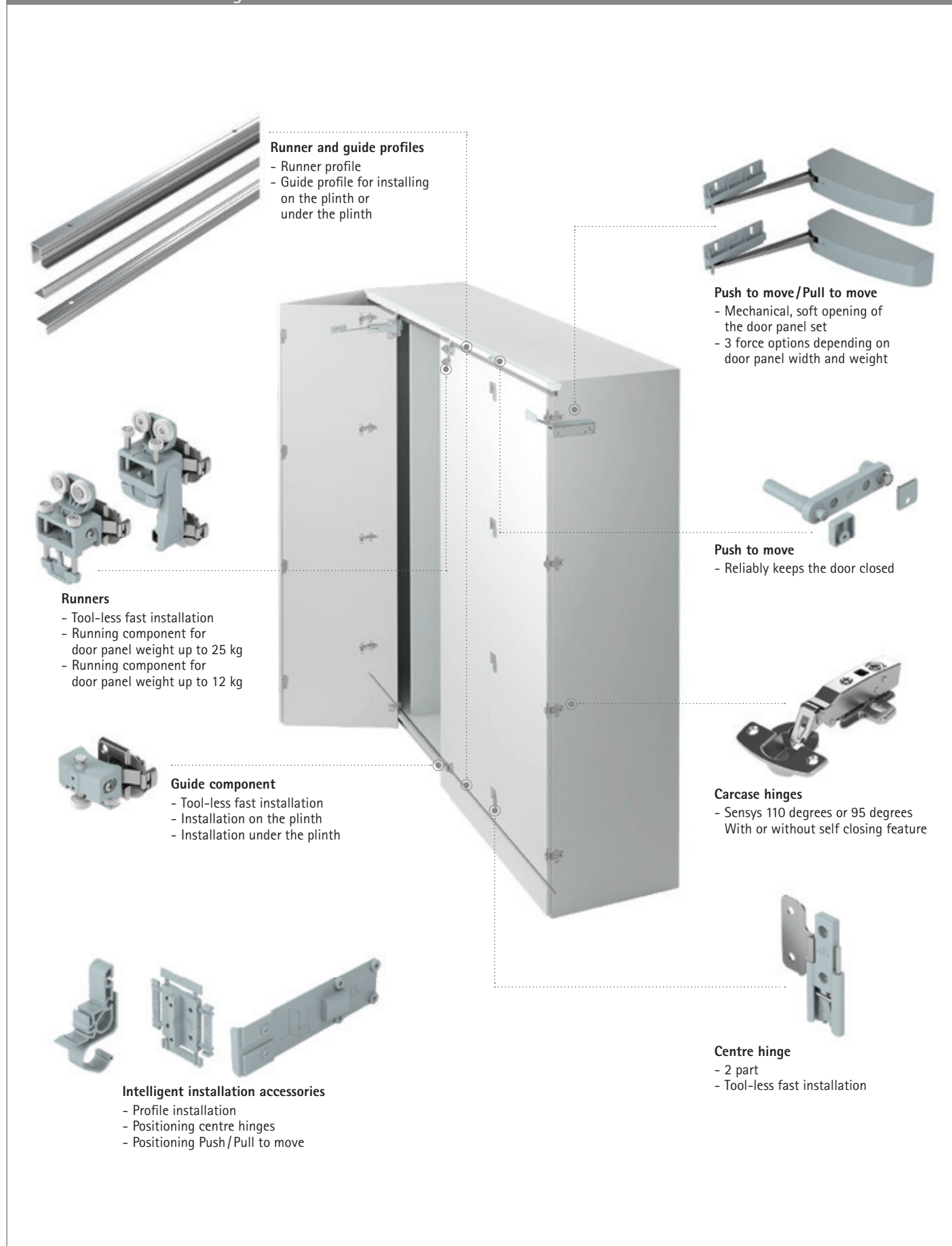
Pull to move Silent



Folding door system

- ▶ WingLine L / attached to the side
- ▶ System summary

The new multifolder: WingLine L

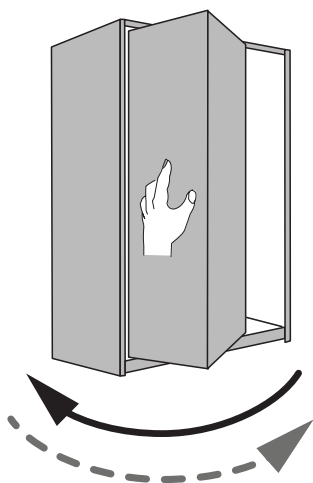


Folding door system

- ▶ WingLine L / attached to the side
- ▶ System summary

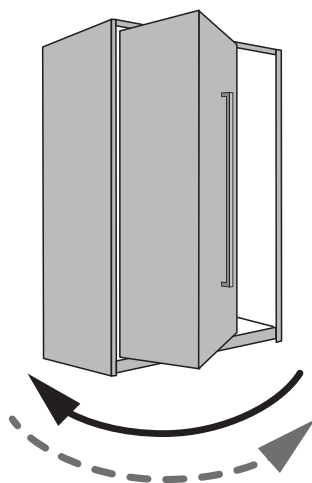
WingLine L with Push to move and Pull to move

Pull to move and Push to move are two innovative and unique opening mechanisms for folding door systems. A slight pull on the handle or gentle push on the (handleless) front automatically opens the door all the way, taking it to the open position in a cushioned movement. A fascinating opening effect that works all mechanically! This means it requires neither cables nor any connection to the power supply.



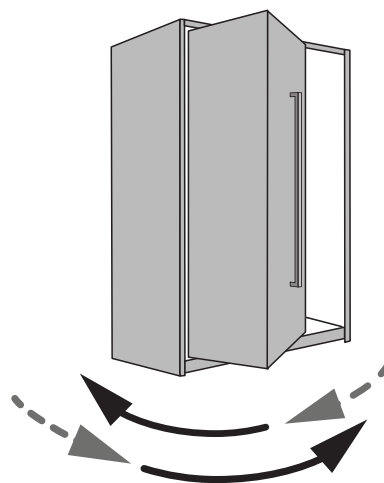
Push to move

The door opens automatically in response to a light press on the front and is returned to the closed position by hand.



Pull to move

The door opens automatically from a 1° opening angle in response to a minimal pull on the handle and is returned to the closed position by hand.

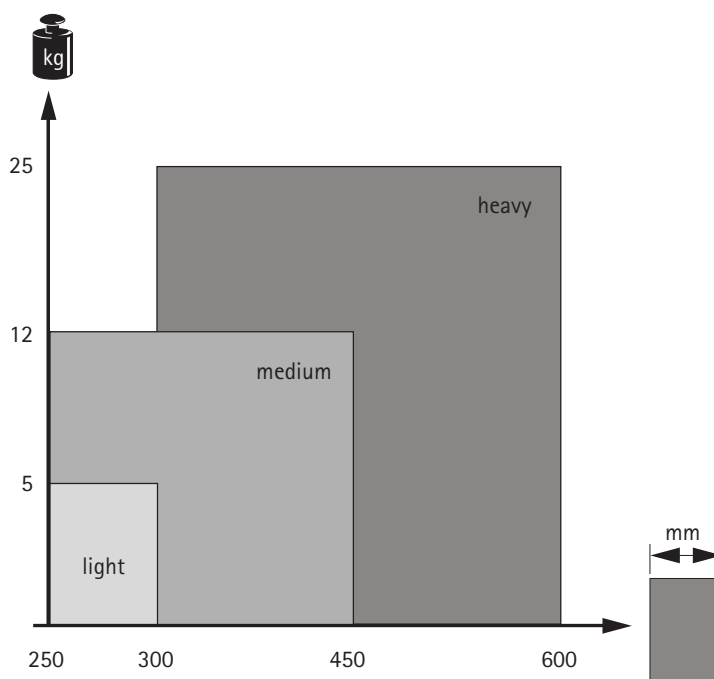


Pull to move Silent

The door opens automatically from a 35° opening angle in response to a slight pull on the handle and is returned to the closed position in a cushioned movement.

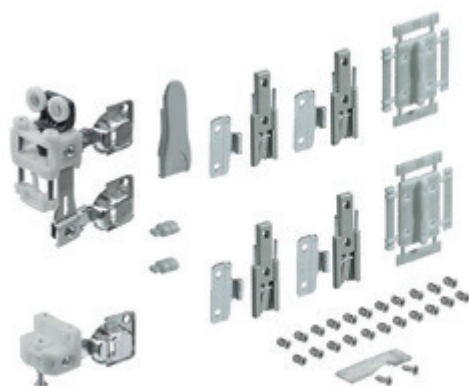
Capacity classes

For Push to move and Pull to move to work perfectly in conjunction with every door size and weight, the modules are available in various capacity classes. Choose the right set for your particular application. A trial mounting is recommended!



- ▶ WingLine L / attached to the side
- ▶ System components

WingLine L set of fittings for max. door wing weight of 25 kg with self closing feature



- ▶ Set of fittings contains all the parts required for 1 folding sliding door with 2 wings
- ▶ Set of fittings can be used for standard folding door application without opening mechanism
- ▶ Set of fittings can be used in combination with Pull to move Silent
- ▶ Running and guide components with spring assisted self closing feature
- ▶ Running and guide components with tool-less fast installation function

Set comprises:

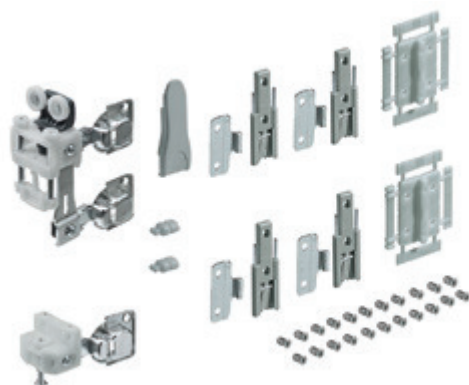
- ▶ 1 running component, 25 kg max, with self closing feature
- ▶ 1 guide component with self closing feature
- ▶ 4 folding door hinges
- ▶ 2 positioning aids for centre hinges
- ▶ 1 running component cover
- ▶ 2 door dampers
- ▶ 1 stay open element
- ▶ Fixing screws

Advice:

- ▶ Please order profiles separately
- ▶ Carcase hinges with self closing feature must be used with this set of fittings. Recommendation: Sensys 8645i opening angle 110°

Order no. / Hinge side of cabinet		PU
left	right	
9 237 852	9 237 890	1 set

WingLine L set of fittings for max. door wing weight of 25 kg without self closing feature



- ▶ Set of fittings contains all the parts required for 1 folding sliding door with 2 wings
- ▶ Set of fittings can only be used in combination with Pull to move and Push to move
- ▶ Running and guide components without spring assisted self closing feature
- ▶ Running and guide components with tool-less fast installation function

Set comprises:

- ▶ 1 running component, 25 kg max, without self closing feature
- ▶ 1 guide component without self closing feature
- ▶ 4 folding door hinges
- ▶ 2 positioning aids for centre hinges
- ▶ 1 running component cover
- ▶ 2 door dampers
- ▶ 1 stay open element
- ▶ Fixing screws

Advice:

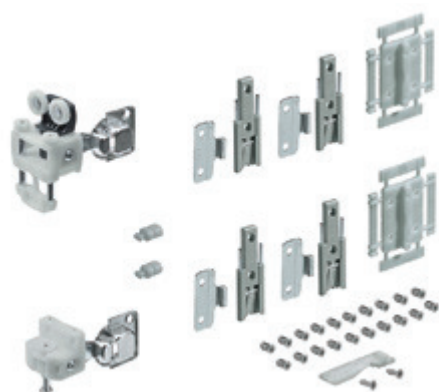
- ▶ Please order profiles separately
- ▶ Carcase hinges without self closing feature must be used with this set of fittings. Recommendation: Sensys 8675 opening angle 110°

Order no. / Hinge side of cabinet		PU
left	right	
9 237 880	9 237 881	1 set

Folding door system

- ▶ WingLine L / attached to the side
- ▶ System components

WingLine L set of fittings for max. door wing weight of 12 kg with self closing feature and bottom guide



- ▶ Set of fittings contains all the parts required for 1 folding sliding door with 2 wings
- ▶ Set of fittings can be used for standard folding door application without opening mechanism
- ▶ Set of fittings can be used in combination with Pull to move Silent
- ▶ Running and guide component with spring assisted self closing feature
- ▶ Running and guide component with fast installation function

Set comprises:

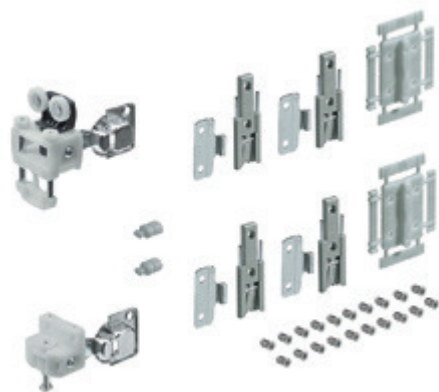
- ▶ 1 running component, 12 kg max, with self closing feature
- ▶ 1 guide component with self closing feature
- ▶ 4 folding door hinges
- ▶ 2 positioning aids for centre hinges
- ▶ 2 door dampers
- ▶ 1 stay open element
- ▶ Fixing screws

Advice:

- ▶ Please order profiles separately
- ▶ Carcase hinges with self closing feature must be used with this set of fittings. Recommendation: Sensys 8645i opening angle 110°

Order no. / Hinge side of cabinet		PU
left	right	
9 237 882	9 237 906	1 set

WingLine L set of fittings for max. door panel weight of 12 kg without self closing feature and bottom guide



- ▶ Set of fittings contains all the parts required for 1 folding sliding door with 2 wings
- ▶ Set of fittings can only be used in combination with Pull to move and Push to move
- ▶ Running and guide components without spring assisted self closing feature
- ▶ Running and guide component with tool-less fast installation function

Set comprises:

- ▶ 1 running component, 12 kg max, without self closing feature
- ▶ 1 guide component without self closing feature
- ▶ 4 folding door hinges
- ▶ 2 positioning aids for centre hinges
- ▶ 2 door dampers
- ▶ 1 stay open element
- ▶ Fixing screws

Advice:

- ▶ Please order profiles separately
- ▶ Carcase hinges without self closing feature must be used with this set of fittings. Recommendation: Sensys 8675 opening angle 110°

Order no. / Hinge side of cabinet		PU
left	right	
9 237 905	9 237 904	1 set

Folding door system

- ▶ WingLine L / attached to the side
- ▶ System components

WingLine L set of fittings for max. door panel weight of 12 kg with self closing feature, without bottom guide



- ▶ Set of fittings contains all the parts required for 1 folding sliding door with 2 wings
- ▶ Set of fittings can be used for standard folding door application without opening mechanism
- ▶ Set of fittings can be used in combination with Pull to move Silent
- ▶ Running component with spring assisted self closing feature
- ▶ Running component with fast installation function

Set comprises:

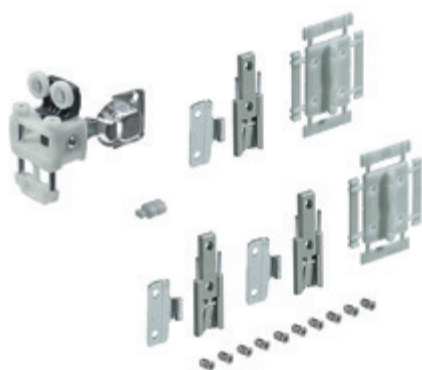
- ▶ 1 running component, 12 kg max, with self closing feature
- ▶ 3 folding door hinges
- ▶ 2 positioning aids for centre hinges
- ▶ 1 door damper
- ▶ 1 stay open element (available from November 2017)
- ▶ Fixing screws

Advice:

- ▶ Please order profiles separately
- ▶ Carcase hinges with self closing feature must be used with this set of fittings. Recommendation: Sensys 8645i opening angle 110°

Order no. / Hinge side of cabinet		PU
left	right	
9 237 903	9 237 902	1 set

WingLine L set of fittings for max. door wing weight of 12 kg without self closing feature, without bottom guide



- ▶ Set of fittings contains all the parts required for 1 folding sliding door with 2 wings
- ▶ Set of fittings can only be used in combination with Pull to move and Push to move
- ▶ Running component without spring assisted self closing feature
- ▶ Running component with fast installation function

Set comprises:

- ▶ 1 running component, 12 kg max, without self closing feature
- ▶ 3 folding door hinges
- ▶ 2 positioning aids for centre hinges
- ▶ 1 door damper
- ▶ Fixing screws

Advice:

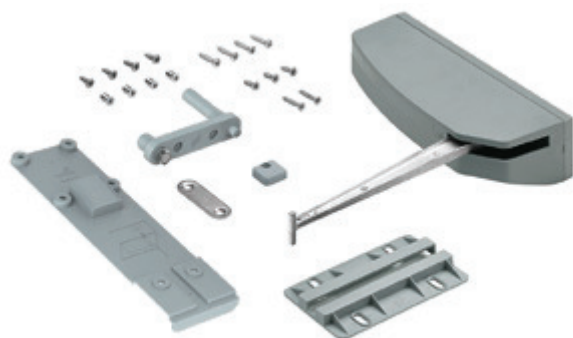
- ▶ Please order profiles separately
- ▶ Carcase hinges without self closing feature must be used with this set of fittings. Recommendation: Sensys 8675 opening angle 110°

Order no. / Hinge side of cabinet		PU
left	right	
9 237 901	9 237 900	1 set

Folding door system

- ▶ WingLine L / attached to the side
- ▶ System components

Push to move



- ▶ Mechanism for automatic, soft opening of a door set by pressing on the handleless front
- ▶ Set contains all the parts required for opening a folding sliding door with 2 wings

Set comprises:

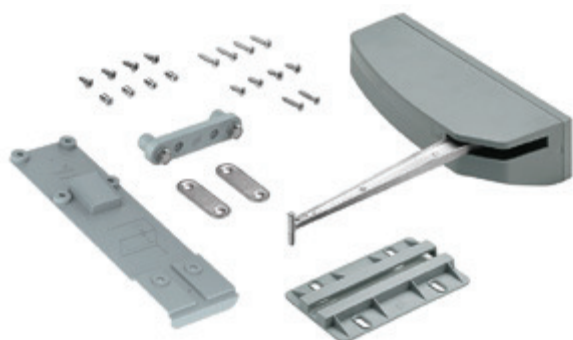
- ▶ 1 Push to move unit
- ▶ 1 support unit with 1 Push to open Pin and 1 magnet
- ▶ 1 magnetic counterplate
- ▶ 1 activator
- ▶ 1 door rail
- ▶ 1 positioning aid
- ▶ Fixing screws

Advice:

- ▶ Please order profiles and fittings separately
- ▶ Carcase hinges without self closing feature must be used in combination with Push to move. Recommendation: Sensys 8675, opening angle 110°

Version	Order no. / Hinge side of cabinet		PU
	left	right	
light	9 238 102	9 238 113	1 set
medium	9 238 051	9 238 101	1 set
heavy	9 238 052	9 238 053	1 set

Pull to move



- ▶ Mechanism for automatic, soft opening of a door set with minimal pull on the handle
- ▶ Set contains all the parts required for opening a folding sliding door with 2 wings

Set comprises:

- ▶ 1 Pull to move unit
- ▶ 1 support unit with 2 magnets
- ▶ 2 magnetic counterplates
- ▶ 1 door rail
- ▶ 1 positioning aid
- ▶ Fixing screws

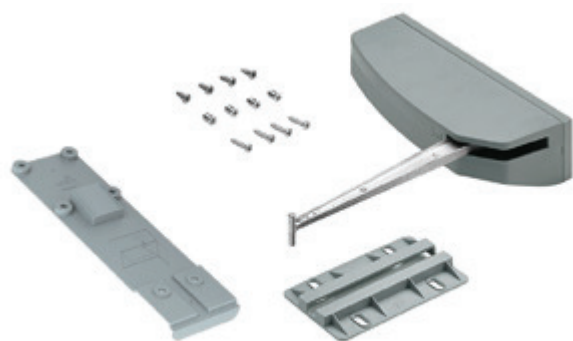
Advice:

- ▶ Please order profiles and fittings separately
- ▶ Carcase hinges without self closing feature must be used in combination with Pull to move. Recommendation: Sensys 8675, opening angle 110°

Version	Order no. / Hinge side of cabinet		PU
	left	right	
light	9 238 117	9 238 118	1 set
medium	9 238 115	9 238 116	1 set
heavy	9 238 125	9 238 114	1 set

- ▶ WingLine L / attached to the side
- ▶ System components

Pull to move Silent



- ▶ Mechanism for automatic, soft opening of a door set with a light pull on the handle
- ▶ Silent and soft closing of the door set with Sensys carcase hinge
- ▶ Set contains all the parts required for opening a folding sliding door with 2 wings

Set comprises:

- ▶ 1 Pull to move Silent unit
- ▶ 1 door rail
- ▶ 1 positioning aid
- ▶ Fixing screws

Advice:

- ▶ Please order profiles and fittings separately
- ▶ Carcase hinges with self closing feature must be used in combination with Push to move Silent. Recommendation: Sensys 8645, opening angle 110°

Version	Order no. / Hinge side of cabinet		PU
	left	right	
light	9 238 120	9 238 119	1 set
medium	9 238 121	9 238 124	1 set
heavy	9 238 123	9 238 122	1 set

Folding door system

- ▶ WingLine L / attached to the side
- ▶ System components

Running component for door wing weighing up to 25 kg with self closing feature



- ▶ Can be used in standard folding door application without opening mechanism
- ▶ Can be used in combination with Pull to move Silent
- ▶ Tool-less fast installation
- ▶ With 2 concealed hinges
- ▶ +/- 3 mm height adjustment
- ▶ Steel, nickel plated / plastic, grey

Hinge side of cabinet	Order no.	PU
left	9 237 492	50 ea.
right	9 237 493	50 ea.

Running component for door wing weighing up to 25 kg without self closing feature



- ▶ Can only be used in combination with Pull to move and Push to move
- ▶ Tool-less fast installation
- ▶ With 2 concealed hinges
- ▶ +/- 3 mm height adjustment
- ▶ Steel, nickel plated / plastic, grey

Hinge side of cabinet	Order no.	PU
left	9 237 495	50 ea.
right	9 237 494	50 ea.

Running component for door wing weighing up to 12 kg with self closing feature



- ▶ Can be used in standard folding door application without opening mechanism
- ▶ Can be used in combination with Pull to move Silent
- ▶ Tool-less fast installation
- ▶ With 1 concealed hinge
- ▶ +/- 3 mm height adjustment
- ▶ Steel, nickel plated / plastic, grey

Hinge side of cabinet	Order no.	PU
left	9 237 488	50 ea.
right	9 237 484	50 ea.

Running component for door wing weighing up to 12 kg without self closing feature



- ▶ Can only be used in combination with Pull to move and Push to move
- ▶ Tool-less fast installation
- ▶ With 1 concealed hinge
- ▶ +/- 3 mm height adjustment
- ▶ Steel, nickel plated / plastic, grey

Hinge side of cabinet	Order no.	PU
left	9 237 479	50 ea.
right	9 237 480	50 ea.

- ▶ WingLine L / attached to the side
- ▶ System components

Guide component with self closing feature



- ▶ Can be used in standard folding door application without opening mechanism
- ▶ Guide component with 3 runner rollers and 1 concealed hinge
- ▶ Can be used in combination with Pull to move Silent
- ▶ Tool-less fast installation
- ▶ Installation on or under the plinth
- ▶ Steel, nickel plated / plastic, grey

Mounting option	Order no. / Hinge side of cabinet		PU
	left	right	
Installation on plinth	9237431	9237432	100 ea.
Installation under plinth	9237432	9237431	100 ea.

Guide component without self closing feature



- ▶ Can only be used in combination with Pull to move and Push to move
- ▶ Guide component with 3 runner rollers and 1 concealed hinge
- ▶ Tool-less fast installation
- ▶ Installation on or under the plinth
- ▶ Steel, nickel plated / plastic, grey

Mounting option	Order no. / Hinge side of cabinet		PU
	left	right	
Installation on plinth	9237433	9237434	100 ea.
Installation under plinth	9237434	9237433	100 ea.

Centre hinge, fast installation



- ▶ Centre hinge, comprising 2 components
- ▶ Tool-less door panel installation
- ▶ For easy screw mounting on door panel
- ▶ Plastic, grey (1), galvanised steel (2)

Version	Order no.	PU
Hinge component 1	9 229 920	200 ea.
Hinge component 2	9 236 605	400 ea.

Centre hinge with adjustable offset pivot



- ▶ Centre hinge for folding doors
- ▶ For door thicknesses from 15 mm
- ▶ Same drilling pattern for door and side element, both elements are mounted separately
- ▶ The reveal can be infinitely adjusted from minimum reveal to + 4 mm, application is always flush
- ▶ Gradual adjustment of the pivot offset with 0 mm, 3 mm and 6 mm
- ▶ Zinc die-cast nickel plated

Mounting option	Order no.	PU
For pressing in	1 001 955	100 ea.

Folding door system

- ▶ WingLine L / attached to the side
- ▶ System components

Profile set



- ▶ Aluminium, anodized
- ▶ Screw mounting positions predrilled

Set comprises:

- ▶ 1 runner profile
- ▶ 1 guide profile
- ▶ 2 profile mounting clips
- ▶ Fixing screws

Advice:

- ▶ Please make a separate order for fittings, Push to move, Pull to move and Pull to move Silent

Length mm	Order no.	PU
1200	9 239 311	1 set
2400	9 239 310	1 set

Runner profile



- ▶ Aluminium
- ▶ For screwing on
- ▶ Screw on positions predrilled

Advice:

customised lengths on request

Length mm	Finish	Order no.	PU
1200	Anodized	9 237 916	100 ea.
2400	Anodized	9 237 917	100 ea.
1200	bright	9 237 991	100 ea.
2400	bright	9 237 992	100 ea.
individual	individual	LA 02070	100 ea.

Guide profile



- ▶ Aluminium
- ▶ For screwing on
- ▶ Screw on positions predrilled

Advice:

Customised lengths on request

Length mm	Finish	Order no.	PU
1200	Anodized	9 237 989	100 ea.
2400	Anodized	9 237 990	100 ea.
1200	bright	9 237 987	100 ea.
2400	bright	9 237 988	100 ea.
individual	individual	LA 12130	100 ea.

- ▶ WingLine L / attached to the side
- ▶ System components

Cover cap for running component for door wings weighing up to 25 kg



- ▶ For covering running components for door wings weighing up to 25 kg
- ▶ Plastic, grey

Order no.	PU
9 227 326	500 ea.

Door damper



- ▶ Prevents running and guide component from colliding with the side panel
- ▶ One door damper must be fitted for each running and guide component
- ▶ Can be shortened as required to suit door overlay
- ▶ Plastic, grey

Order no.	PU
9 236 926	500 ea.

Stay open element



- ▶ Holds door set in opened position
- ▶ Prevents the door set from springing back
- ▶ One stay open element must be used for each door set
- ▶ Not needed when using Push to move, Pull to move or Pull to move Silent
- ▶ Plastic, grey
- ▶ Available from November 2017

Hinge side of cabinet	Order no.	PU
left	9 237 710	500 ea.
right	9 237 711	500 ea.

Positioning aid centre hinge



- ▶ For easily defining the right drilling position for the fast assembly centre hinge
- ▶ 2 mm, 3 mm, 4 mm and 7 mm centre reveal possible
- ▶ Plastic, grey

Order no.	PU
9 237 039	100 ea.

- ▶ WingLine L / attached to the side
- ▶ System components

Door protection clip



- ▶ Prevents a bowing door from colliding with the centre panel on closing
- ▶ Installed on the side panel in hole line 37 or 28
- ▶ Plastic, grey

Order no.	PU
9 236 460	500 ea.

Profile support



- ▶ Supports the runner profile at the end of the profile
- ▶ Use is recommended if the last screw on position cannot be used in the profile for design reasons
- ▶ Plastic, grey

Order no.	PU
9 236 461	500 ea.

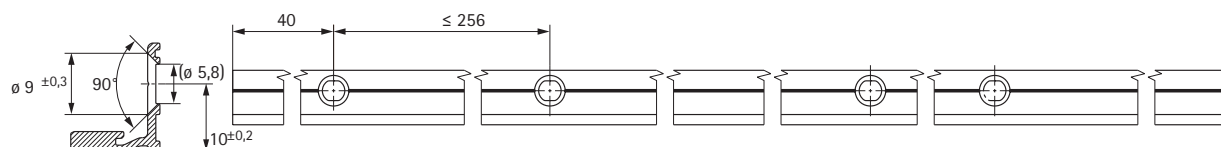
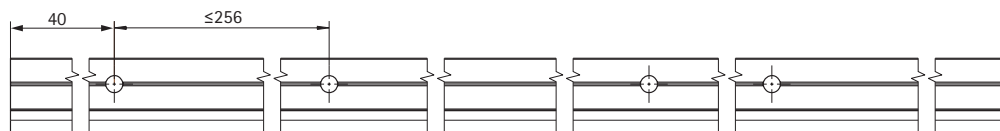
Profile mounting clip



- ▶ Securely holds the profiles in the correct screw mounting position
- ▶ Installation clip can be used on the runner profile and guide profile (on and under the plinth)
- ▶ Plastic, grey

Order no.	PU
9 237 758	500 ea.

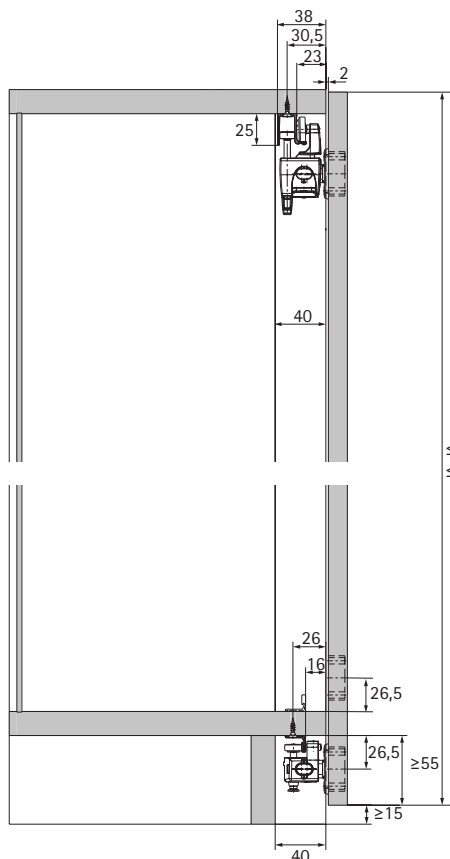
- ▶ WingLine L / attached to the side
- ▶ Planning dimensions



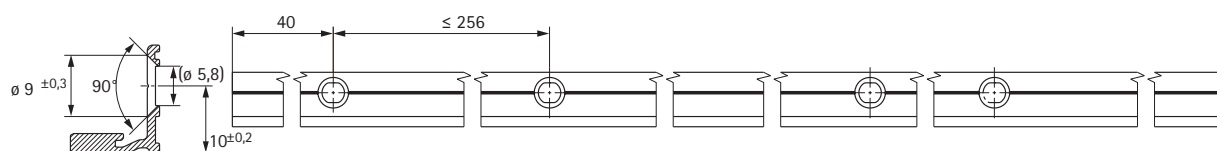
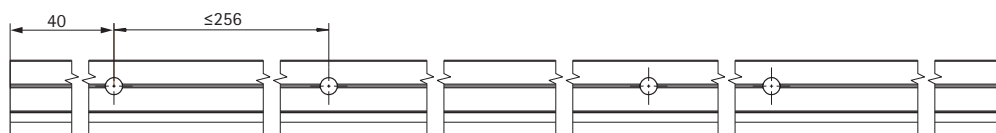
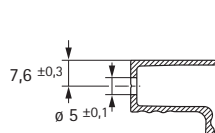
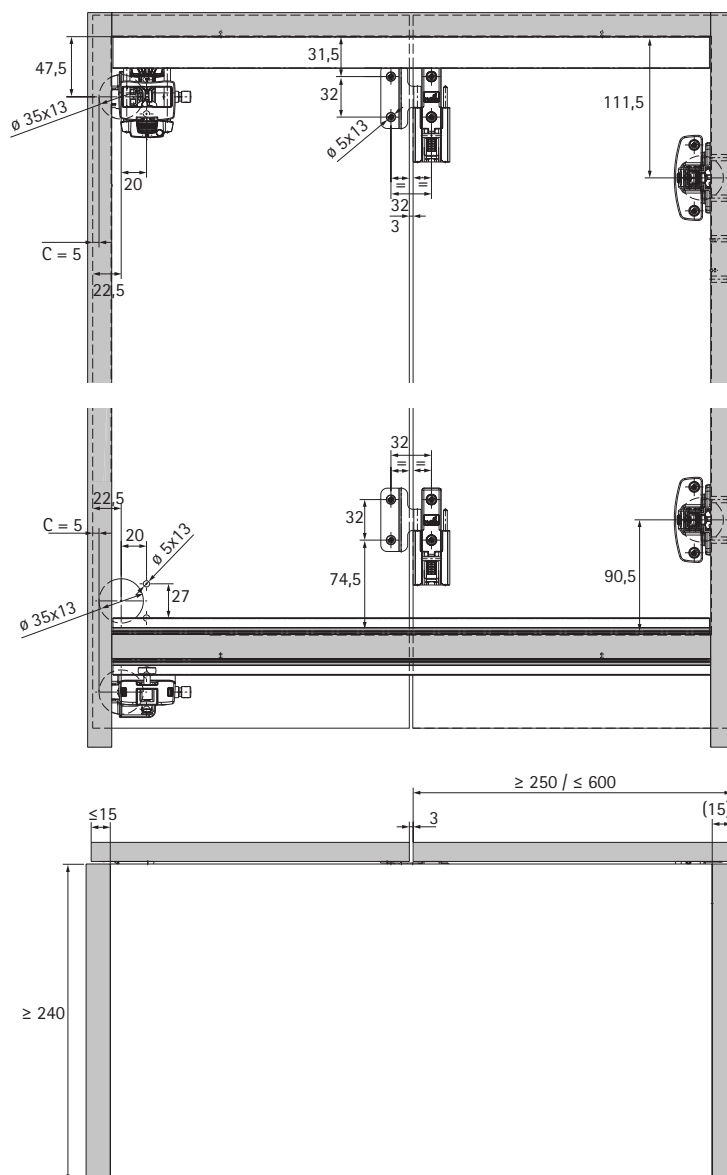
Folding door system

- ▶ WingLine L / attached to the side
- ▶ Planning dimensions

WingLine L max. door panel weight 12 kg

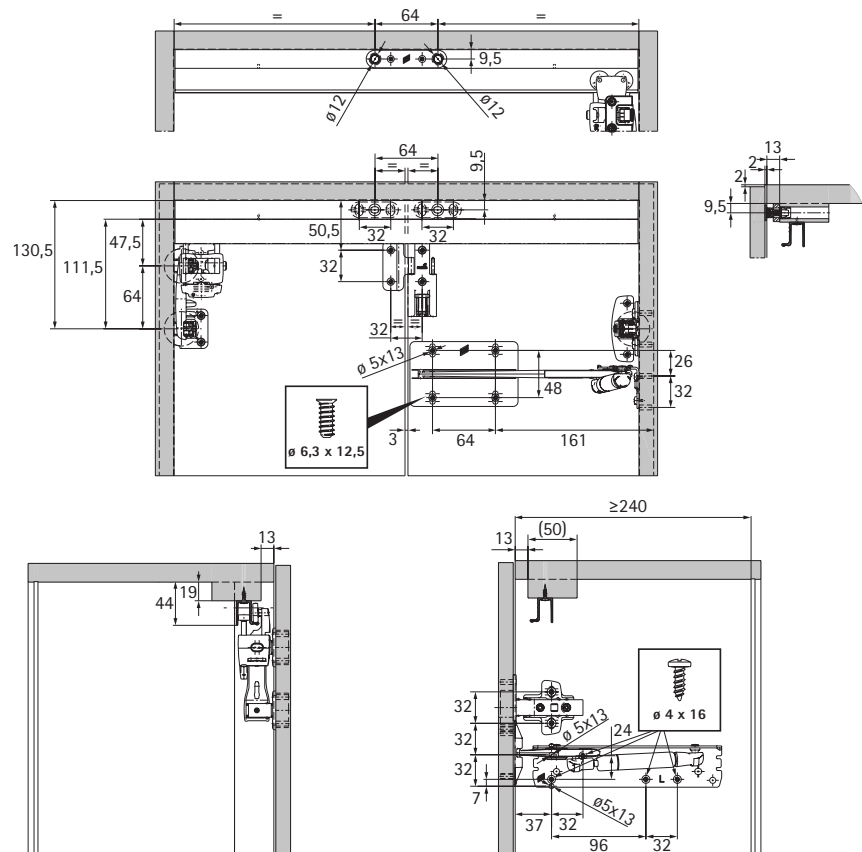
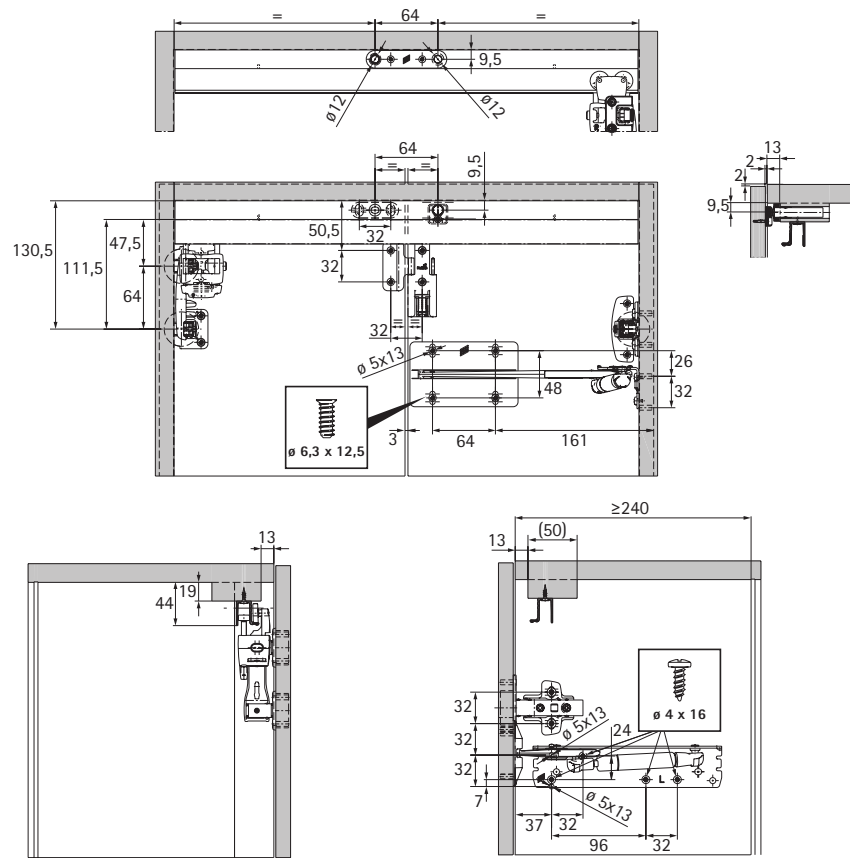


≤ 2400 /
≤ 12 kg



- ▶ WingLine L / attached to the side
- ▶ Planning dimensions

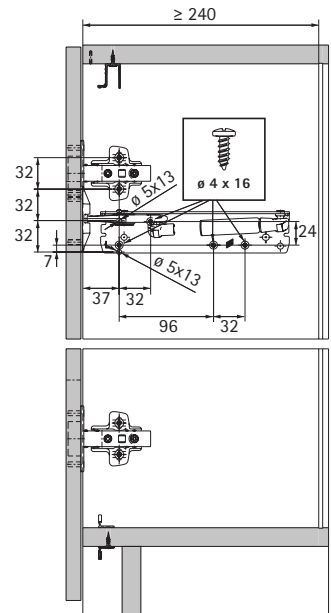
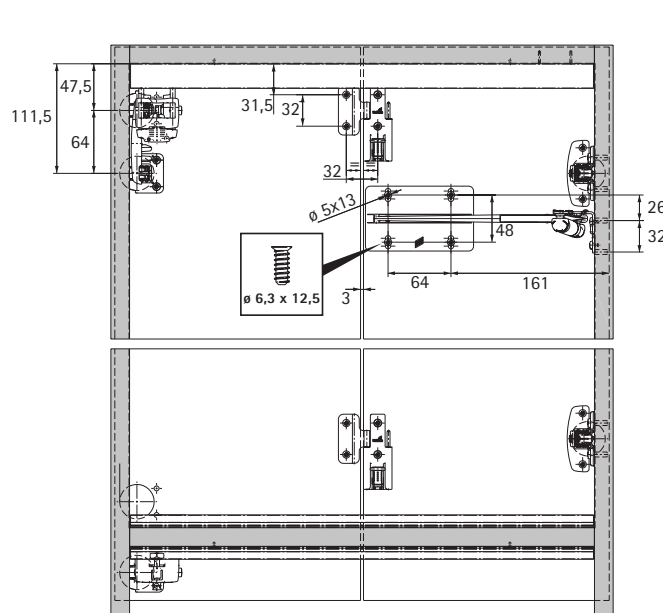
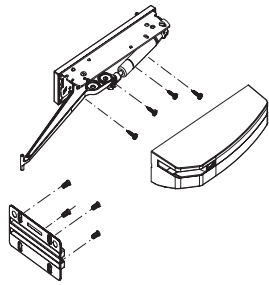
This diagram illustrates the exploded view of the front door assembly. The main components shown are the front door, the hinge mechanism, and the handle. The hinge mechanism includes a hinge arm, a hinge pin, and a hinge bracket. The handle is shown with its mounting bracket and screws. The diagram uses dashed lines to indicate the assembly path and alignment of the parts.



Folding door system

- ▶ WingLine L / attached to the side
- ▶ Planning dimensions

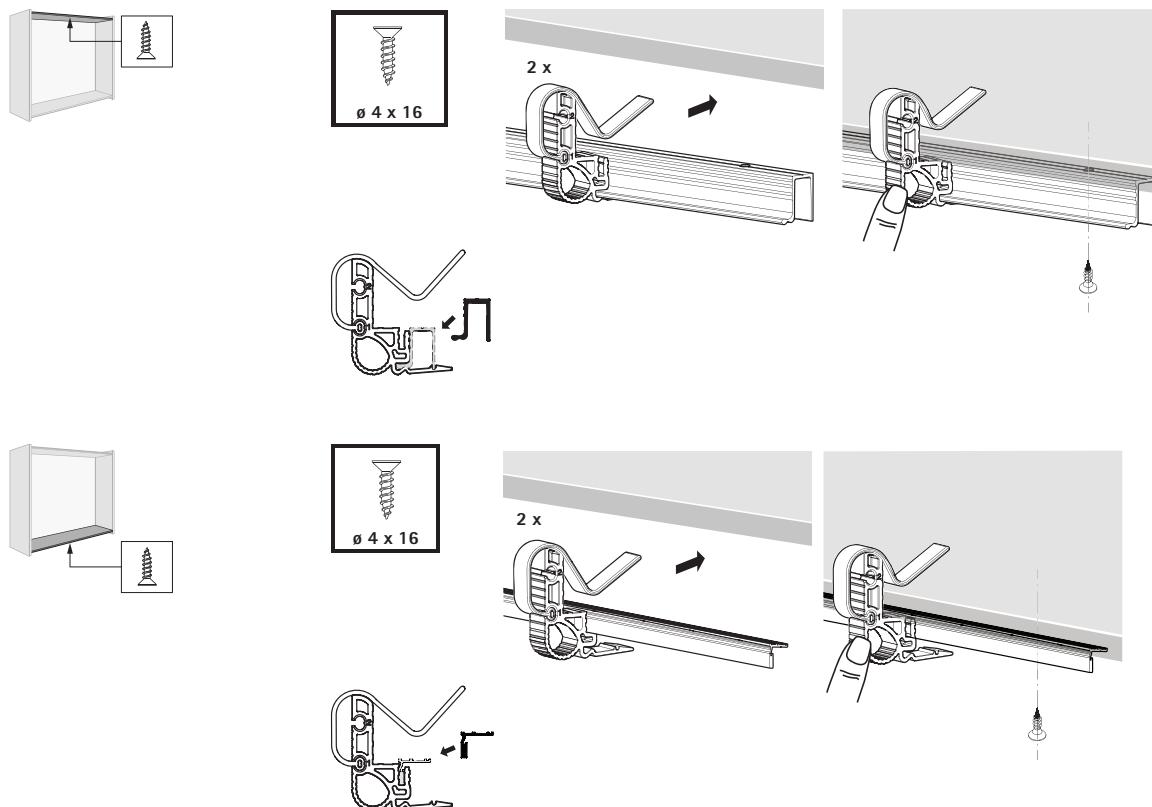
WingLine L with Pull to move Silent



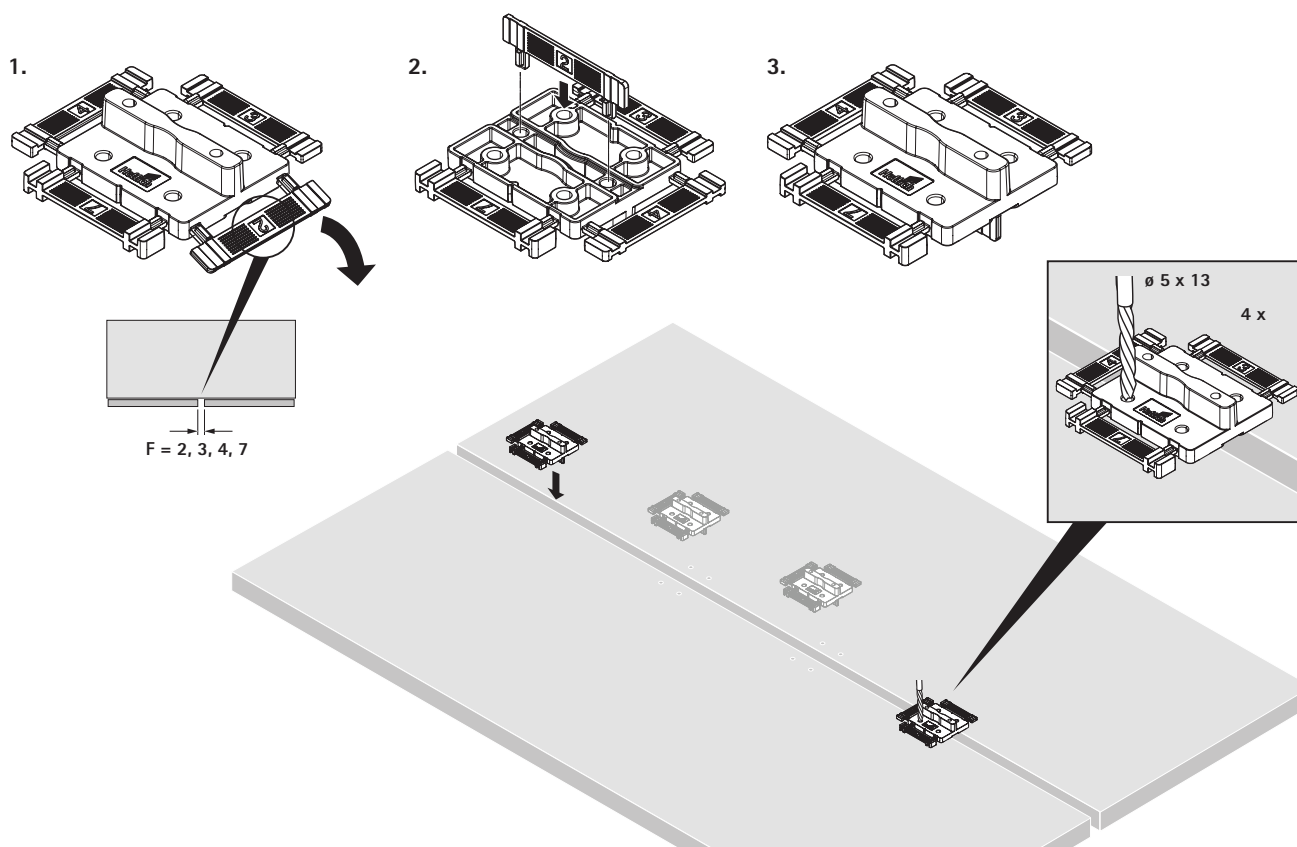
Folding door system

- ▶ WingLine L / attached to the side
- ▶ Installation

Installing runner and guide profiles



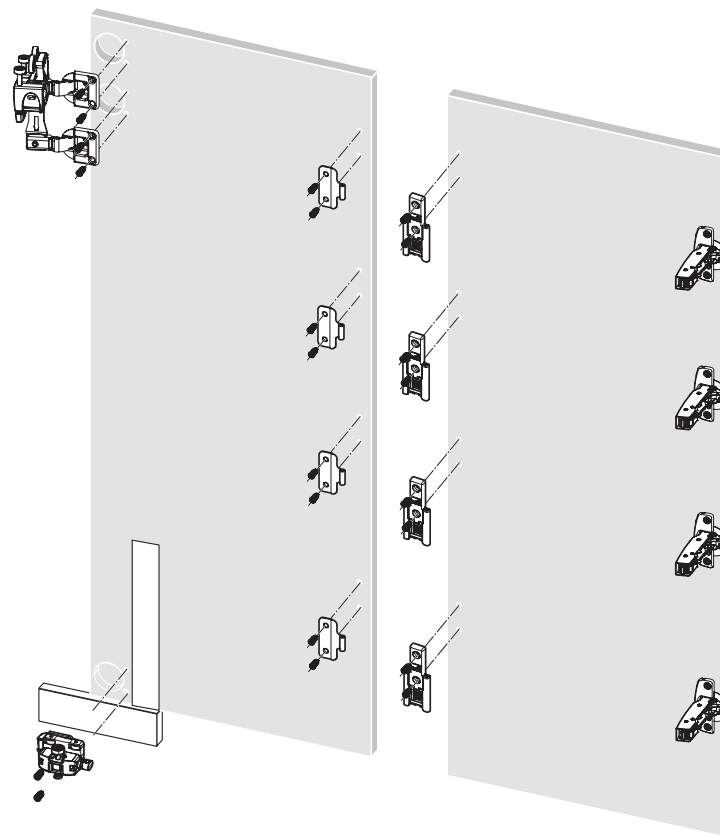
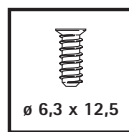
Positioning centre hinges



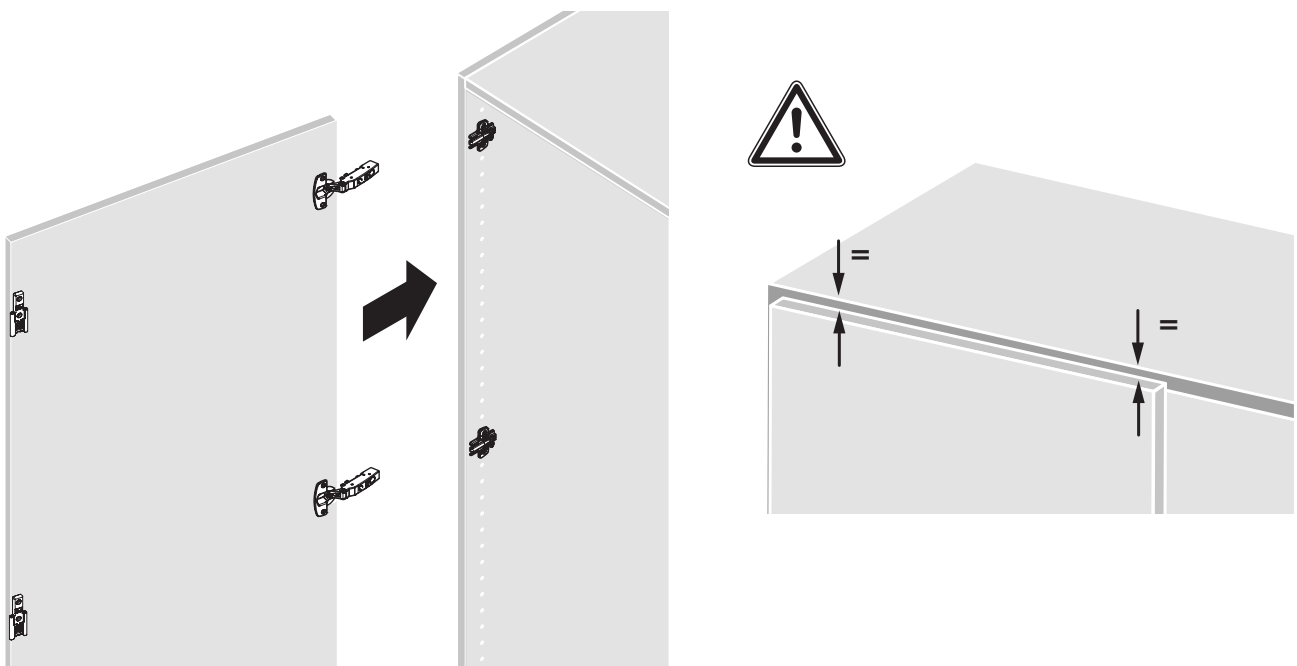
Folding door system

- ▶ WingLine L / attached to the side
- ▶ Installation

Installing fitting components



Installing first door wing

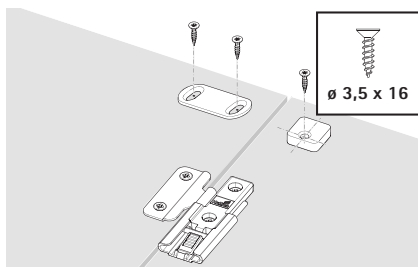
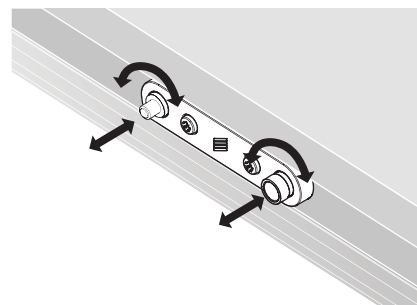
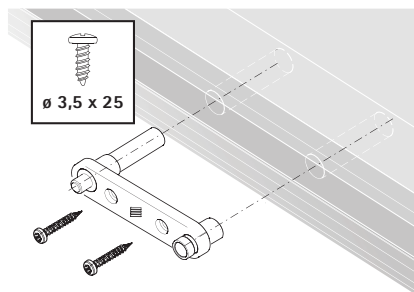
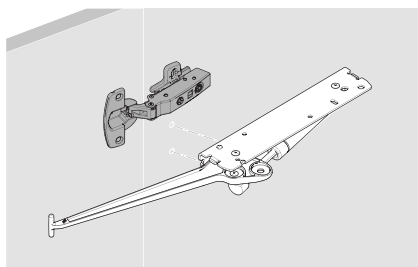


Folding door system

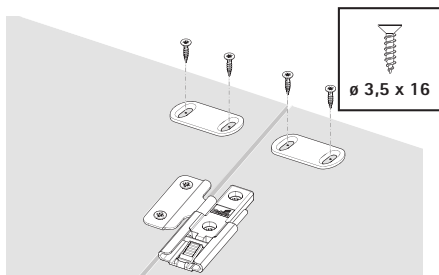
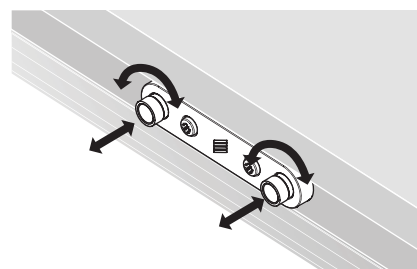
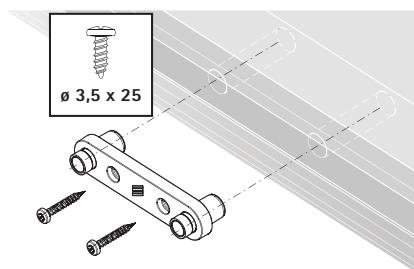
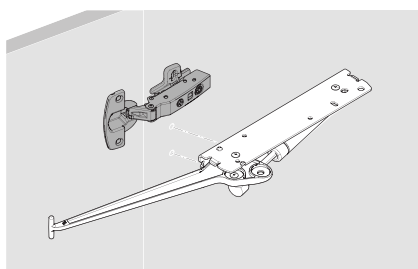
- ▶ WingLine L / attached to the side
- ▶ Installation

Installing Push to move / Pull to move / Pull to move Silent

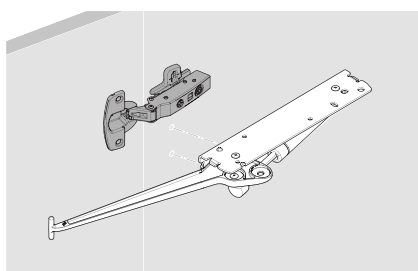
Push to move



Pull to move



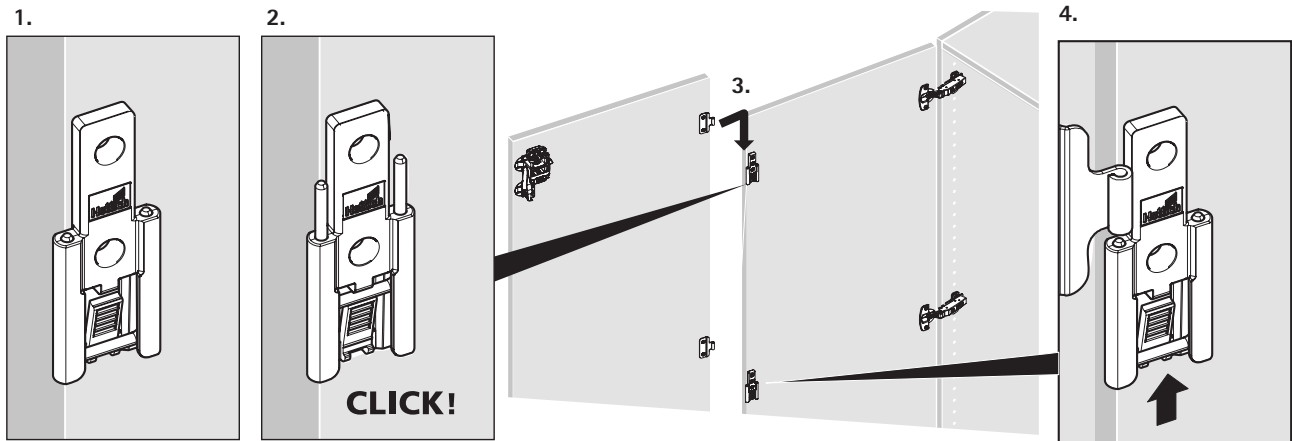
Pull to move Silent



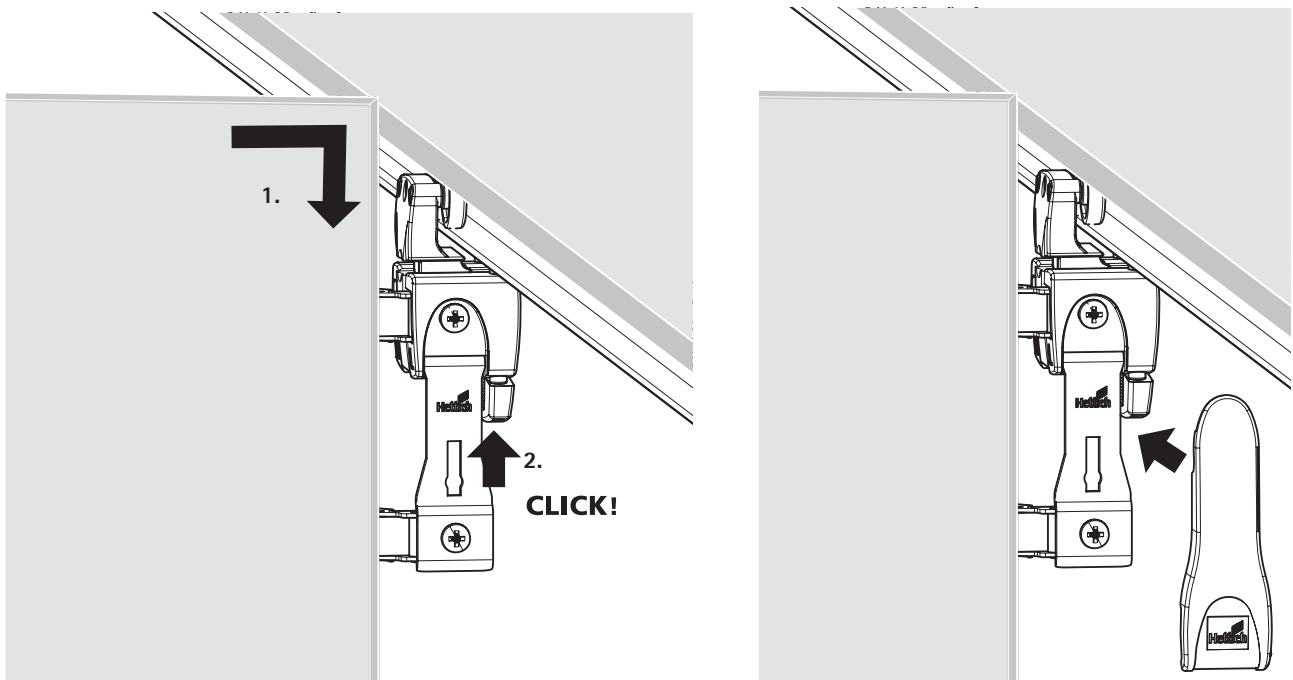
Folding door system

- ▶ WingLine L / attached to the side
- ▶ Installation

Toolless fast installation of the second door wing



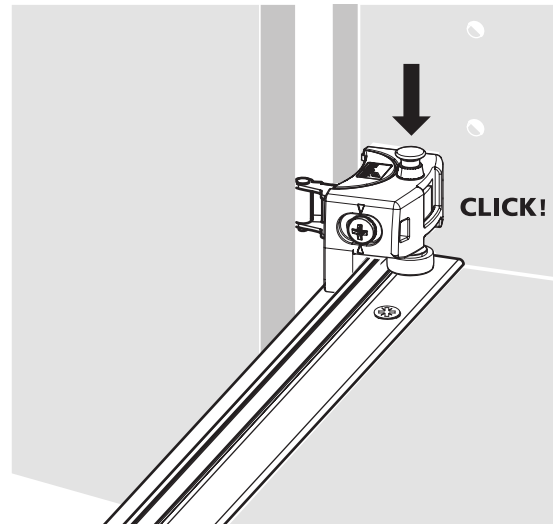
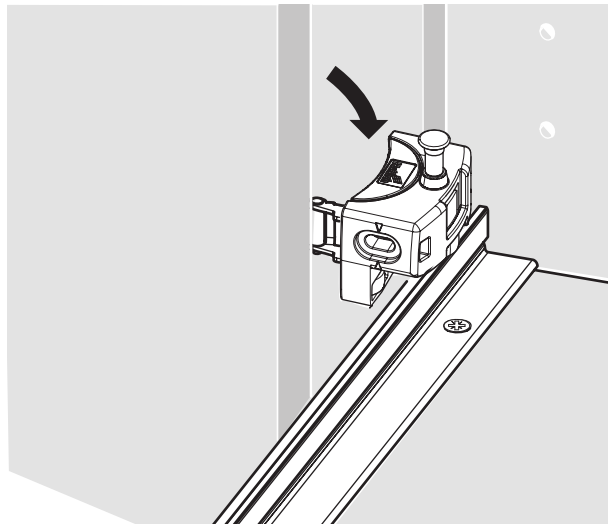
Tool-less running component fast assembly



Folding door system

- ▶ WingLine L / attached to the side
- ▶ Installation

Tool-less fast assembly of guide components



Height adjustment at the running component

